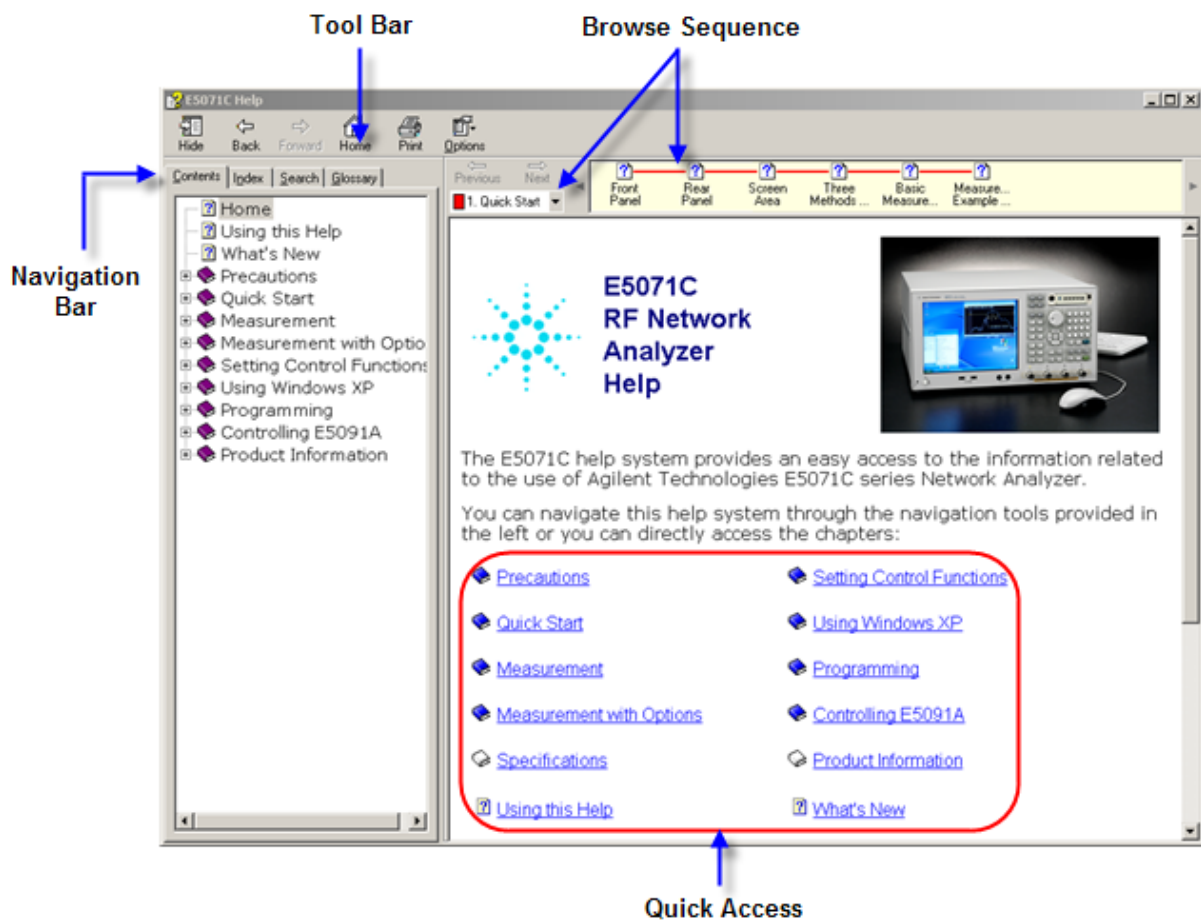


## Using this Help

This help provides the user and programming documentation in an searchable electronic format for the E5071C Network Analyzer. This section describes the usage of this help system.

- Opening E5071C Help
- [Closing E5071C Help](#)
- [Viewing E5071C Help on PC](#)
- Context Sensitive Help
- [Switching between E5071C Help and Measurement View](#)
- [Navigating E5071C Help](#)
- [Conventions used in E5071C Help](#)

### *E5071C Online Help*



e5071c199


## Opening E5071C Help

This help system is provided in Microsoft Compressed HTML Help format (ENA\_C\_Help.chm). This help can also be viewed on a normal PC.

To open E5071C help, use either of the following methods:

- By pressing the **Help** key located in the **ENTRY** Block.
- By pressing the **F1** key on a keyboard attached with the E5071C.
- By double-clicking **ENA\_C\_Help.chm** (located in **D:\Agilent\Help**).

## Closing E5071C Help

To close the E5071C help, click , located on the top right of the E5071C help viewer.

## Viewing E5071C Help on your PC

The E5071C help can be opened and viewed on a normal PC. The help file (**ENA\_C\_Help.chm**) is located in the E5071C Network Analyzer hard disk at **D:\Agilent\Help**. Copy it to a local hard disk drive on your PC, then double-click it to view.

## Context Sensitive Help

Context sensitive help is a special feature of the E5071C help in firmware revision A.08.0x or later. It allows User to get information about the selected softkey by pressing the **Help** key in the E5071C or by pressing **F1** in a keyboard attached to the E5071C or by clicking the help button in a dialog box. This special feature is known as context sensitive help as User receive information quickly depending upon which area the user is working, in the firmware of the E5071C. It provides information relevant to the task that needs to be accomplished and reduces the time to search relevant information required to complete a task.

## Switching between E5071C Help and Measurement View

The **Focus** Key, located in the **Entry** Block, can be used to switch between the E5071C Measurement View and Help View.

## Navigating E5071C Help

The E5071C help system provides several ways to navigate through the information related to the use of E5071C Network Analyzer. This sections describes the navigation system of the E5071C help which consists of:

- [Navigation bar](#)
- [Quick Access](#)
- [Toolbar](#)
- [Browse Sequence](#)

### Navigation bar

Navigation bar comprises of tabs related to **Contents**, **Index**, **Search** and **Glossary**. The **Contents** tab contains the main navigational structure of the E5071C help. The **Glossary** tab contains a text explanation of the terms significant to the E5071C Network Analyzer. The **Index** tab is an additional tool that can be used to navigate different topics according to their alphabetical listing. The **Search** tab can be used to search any term/phrase in the E5071C online Help.

### Toolbar

The toolbar can be used to navigate through the help. The **Home** option can be used to return to the home page of the E5071C help, containing Quick Access to chapters in the help. The **Back** and **Forward** option can be used to toggle between visited topics. The **Print** option can be used to print the selected, or all topic of the E5071C help.

### Browse Sequence

The E5071C help contains pre-defined browse sequence to ease the navigation and to save time needed to perform some commonly used procedures. It also enables users to toggle between steps of the browse sequence.

### Quick Access

Quick access, located on the **Home Page** of the E5071C help, is a convenient and quick way to access the contents of the E5071C help.

## Conventions used in E5071C Help

### *Naming Conventions Used in this Help*

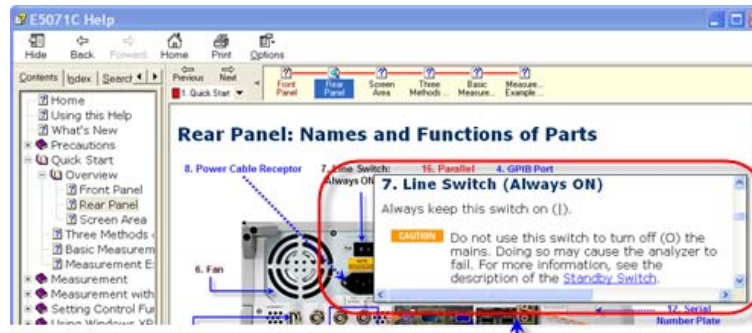
Convention	Description	Example
<b>Normal Text</b>	Normal text is displayed in Verdana, 12 pt.	This is normal text.
<b>File Name/Path</b>	File names and path associated with them as displayed as <b>Bold</b> in Arial with 12 pt size.	<b>C:\Documents and Settings\test.txt example2.xls</b>
<b>Hard keys</b>	Hard Keys (Keys located on the Front panel of E5071C) are displayed in <b>Blue color</b> , <b>Bold</b> in Verdana with 12 pt size.	<b>Trace max Focus Marker</b>
<b>Softkeys</b>	Also known as menu keys, are the names of menu appearing in the Firmware (Software) of E5071C and are displayed as <b>Bold</b> in Arial with 12 pt size.	<b>Auto Scale All S22 Target Transition</b>

**Soft Links**

Soft links displays a Popup window containing detailed information about a particular topic. There are two type of Popup:

**1. Graphical Popup**

Graphical Popup windows can contain graphics as well as text.

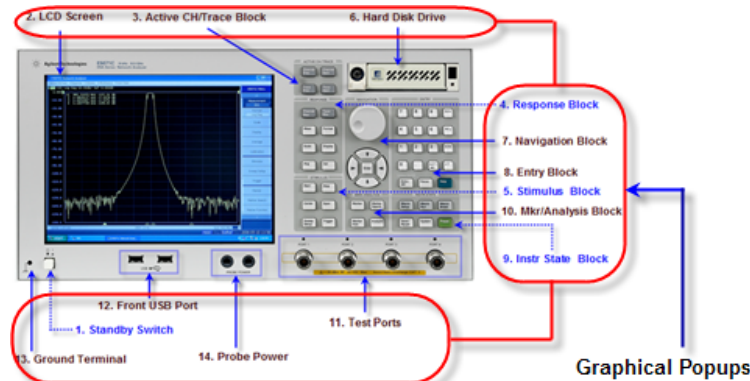


Graphical Popup

**2. Text Only Popup**

Text only Popup windows can contain only text and are displayed with a yellow background.

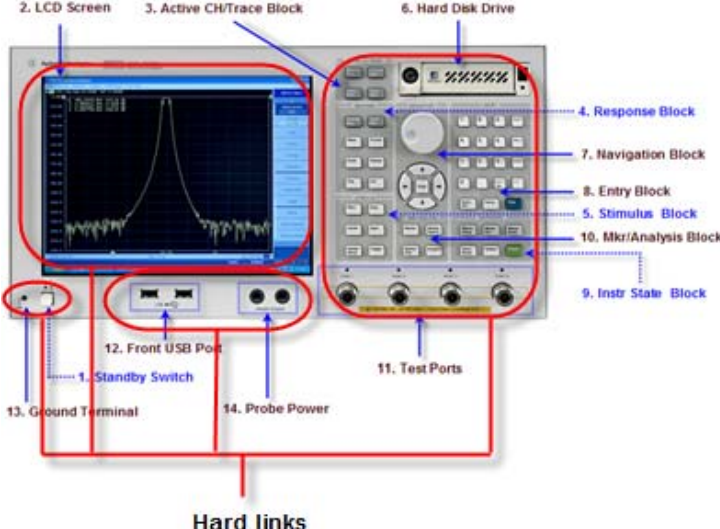
- In real images of the E5071C, all the text marking are Graphical Popup links.



Graphical Popups

Click here to see an example of a graphical popup window.

Click here to see an example of a text only popup window.

<b>Hard Links</b>	<p>Hard links shifts the focus of the active window to display more information about a particular topic.</p> <ul style="list-style-type: none"> <li>In real images of the E5071C, all the picture part of the components are Hard links.</li> </ul>  <p>The diagram shows the front panel of the E5071C instrument with 14 numbered components. Red circles and lines highlight the 'Hard links' for several components: the LCD Screen (2), Active CH/Trace Block (3), Hard Disk Drive (6), Response Block (4), Navigation Block (7), Entry Block (8), Stimulus Block (5), MkriAnalysis Block (10), Instr State Block (9), Front USB Port (12), Ground Terminal (13), and Probe Power (14). The text 'Hard links' is written at the bottom of the diagram.</p>	
<b>BLOCK Names</b>	<p>E5071C Front Panel is divided into 7 blocks. These blocks are displayed in ALL CAPS, <b>Green Color</b>, <b>Bold</b> in Arial with 12 pt size, followed by the word 'Block'.</p>	<p><b>RESPONSE</b> Block  <b>ENTRY</b> Block  <b>STIMULUS</b> Block</p>
<b>Note</b>	<p>This Note sign denotes important information. It calls attention to a condition that is essential for the user to understand.</p>	<p><b>NOTE</b> This is a Note.</p>
<b>Caution</b>	<p>This Caution sign denotes a hazard. It calls attention to a procedure, practice, or condition that, if not correctly performed or adhered to, could result in damage to or destruction of part or all of the instrument.</p>	<p><b>CAUTION</b> This is a Caution.</p>
<b>Warning</b>	<p>This warning sign denotes a hazard. It calls attention to a procedure, practice, or condition that, if not correctly performed or adhered to, could result in injury or death to personnel.</p>	<p><b>WARNING</b> This is a Warning.</p>